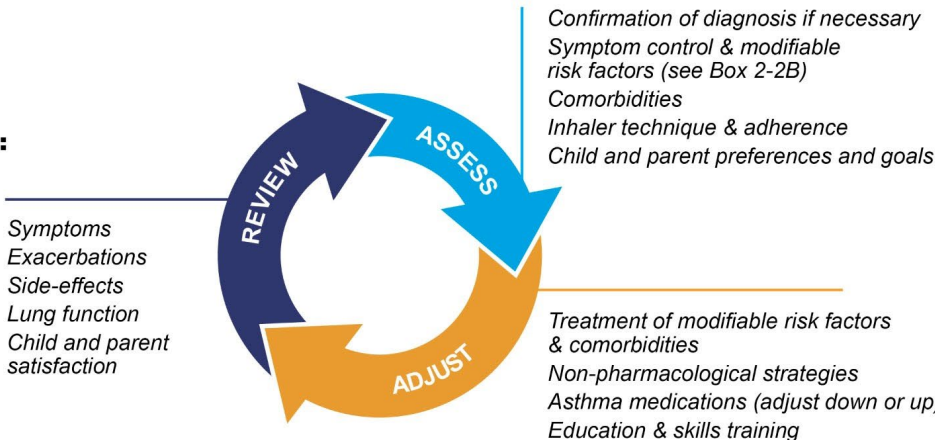


Box 3-5B. Personalized management for children 6–11 years to control symptoms and minimize future risk



## Children 6-11 years

**Personalized asthma management:**  
Assess, Adjust, Review



**Asthma medication options:**  
Adjust treatment up and down for individual child's needs

**PREFERRED CONTROLLER**  
to prevent exacerbations and control symptoms

Other controller options (limited indications, or less evidence for efficacy or safety)

**RELIEVER**

	<p><b>STEP 1</b></p> <p>Low dose ICS taken whenever SABA taken</p>	<p><b>STEP 2</b></p> <p>Daily low dose inhaled corticosteroid (ICS) (see table of ICS dose ranges for children)</p>	<p><b>STEP 3</b></p> <p>Low dose ICS-LABA, OR medium dose ICS, OR very low dose* ICS-formoterol maintenance and reliever (MART)</p>	<p><b>STEP 4</b></p> <p>Medium dose ICS-LABA, OR low dose† ICS-formoterol maintenance and reliever therapy (MART). Refer for expert advice</p>	<p><b>STEP 5</b></p> <p>Refer for phenotypic assessment ± higher dose ICS-LABA or add-on therapy, e.g. anti-IgE, anti-IL4R</p>
	<p>Consider daily low dose ICS</p>	<p>Daily leukotriene receptor antagonist (LTRA), or low dose ICS taken whenever SABA taken</p>	<p>Low dose ICS + LTRA</p>	<p>Add tiotropium or add LTRA</p>	<p>Add-on anti-IL5 or, as last resort, consider add-on low dose OCS, but consider side-effects</p>
<p>As-needed short-acting beta<sub>2</sub>-agonist (or ICS-formoterol reliever for MART as above)</p>					

\*Very low dose: BUD-FORM 100/6 mcg  
†Low dose: BUD-FORM 200/6 mcg (metered doses).

### OHP (Medicaid) Formulary Agents

- Controller ICS:**
- fluticasone HFA
  - fluticasone Diskus
  - Qvar (HFA)
- ICS-LABA:**
- Fluticasone/salmeterol [fluticasone/salmeterol Diskus (DPI), Wixela (DPI), fluticasone-salmeterol DPI]
  - Advair HFA
- ICS-formoterol (MART):**
- Budesonide-formoterol [Budesonide-formoterol (HFA), Brey-na (HFA)]
- SABA:**
- albuterol HFA
  - levalbuterol HFA
- Most pediatric members will have OHP. Spacers are covered on the formulary.**

### COA (Medicare) Formulary Agents

- Controller ICS:**
- Arnuity Ellipta (DPI)
  - Qvar (HFA)
  - Armonair Digihaler (DPI)
- ICS-LABA:**
- Fluticasone/salmeterol [fluticasone/salmeterol Diskus (DPI), Wixela (DPI), fluticasone-salmeterol DPI]
  - Advair HFA
  - Breo Ellipta (DPI)
- ICS-formoterol (MART):**
- Budesonide-formoterol [Brey-na (HFA), budesonide-formoterol (HFA)]
- SABA:**
- albuterol HFA
  - levalbuterol HFA

**Spacers are covered on the Medicaid secondary benefit.**

# Asthma Treatment Pathway

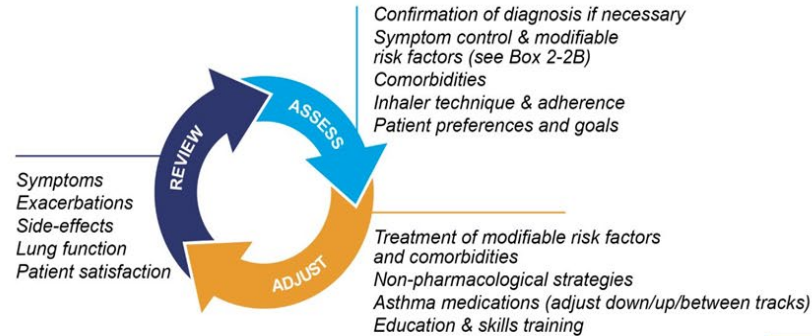
# Ages 12+ to Adult



Box 3-5A. Personalized management for adults and adolescents to control symptoms and minimize future risk

## Adults & adolescents 12+ years

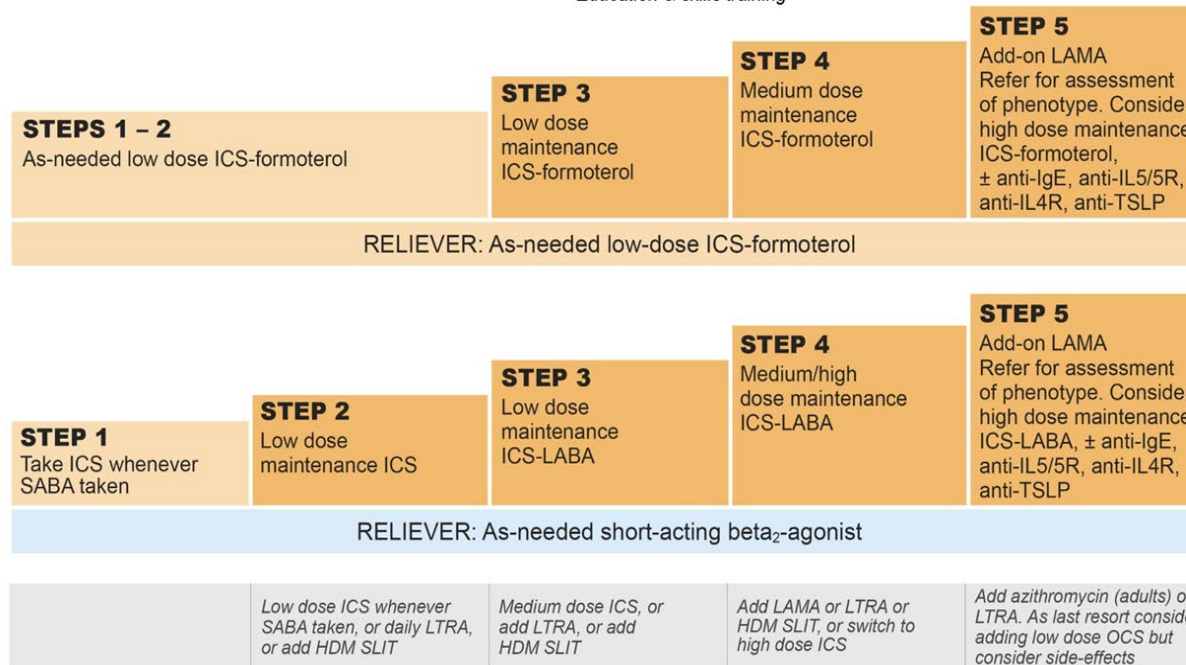
**Personalized asthma management**  
Assess, Adjust, Review  
for individual patient needs



**CONTROLLER** and **PREFERRED RELIEVER** (Track 1). Using ICS-formoterol as reliever reduces the risk of exacerbations compared with using a SABA reliever

**CONTROLLER** and **ALTERNATIVE RELIEVER** (Track 2). Before considering a regimen with SABA reliever, check if the patient is likely to be adherent with daily controller

Other controller options for either track (limited indications, or less evidence for efficacy or safety)



See GINA severe asthma guide

### OHP (Medicaid) Formulary Agents

- Controller ICS:**
- fluticasone HFA
  - fluticasone Diskus (DPI)
  - Qvar (HFA)
- ICS-LABA:**
- Fluticasone/salmeterol [fluticasone/salmeterol Diskus (DPI), Wixela (DPI), fluticasone-salmeterol DPI]
  - Advair HFA
- ICS-formoterol (MART):**
- Budesonide-formoterol [Budesonide-formoterol (HFA), Brey-na (HFA)]
- LAMA:**
- Spiriva Respimat (PA required)
- ICS-LABA-LAMA:**
- Trelegy Ellipta (DPI) (PA required)
- SABA:**
- albuterol HFA
  - levalbuterol HFA

**Most pediatric members will have OHP. Spacers are covered on the formulary.**

### COA (Medicare) Formulary Agents

- Controller ICS:**
- Arnuity Ellipta (DPI)
  - Qvar (HFA)
  - Armonair Digihaler (DPI)
- ICS-LABA:**
- Fluticasone/salmeterol [fluticasone/salmeterol Diskus (DPI), Wixela (DPI), fluticasone-salmeterol DPI]
  - Advair HFA
  - Breo Ellipta (DPI)
- ICS-formoterol (MART):**
- Budesonide-formoterol [Brey-na (HFA), budesonide-formoterol (HFA)]
- LAMA:**
- Spiriva Respimat
- ICS-LABA-LAMA:**
- Trelegy Ellipta (DPI) ([step therapy](#) required)
- SABA:**
- albuterol HFA
  - levalbuterol HFA

**Spacers are covered on the Medicaid secondary benefit.**